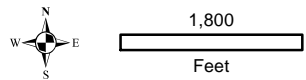
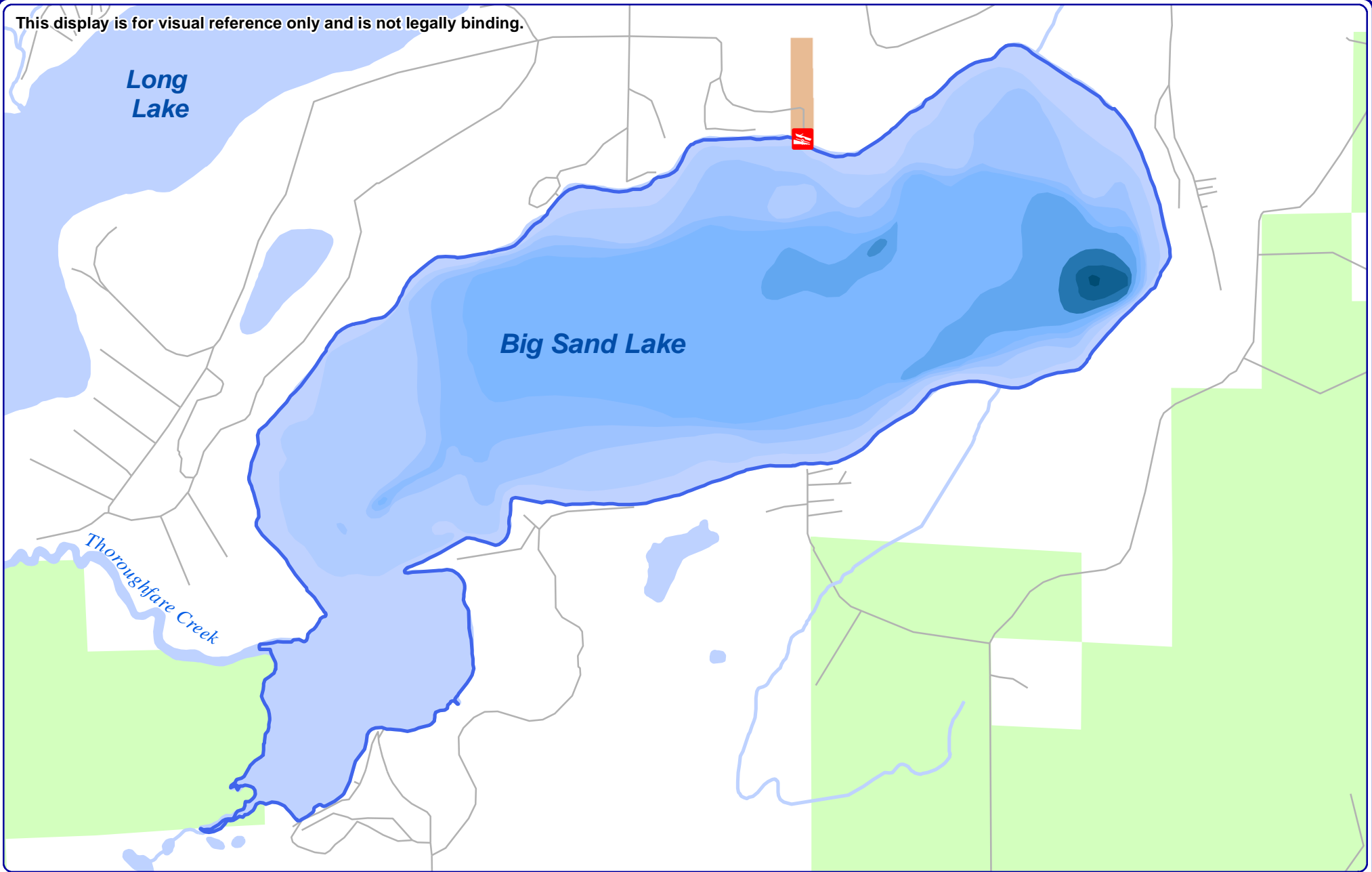
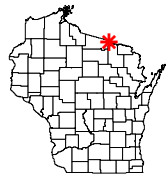


This display is for visual reference only and is not legally binding.



Onterra LLC
Lake Management Planning
815 Prosper Road
De Pere, WI 54115
920.338.8860
www.onterra-eco.com

Sources:
Roads and Hydro: WDNR
Bathymetry: WDNR, digitized by Onterra
Public Lands: WDNR
Map Date: December 9th, 2022 KLW
Filename: Map1_BigSand_Location.mxd

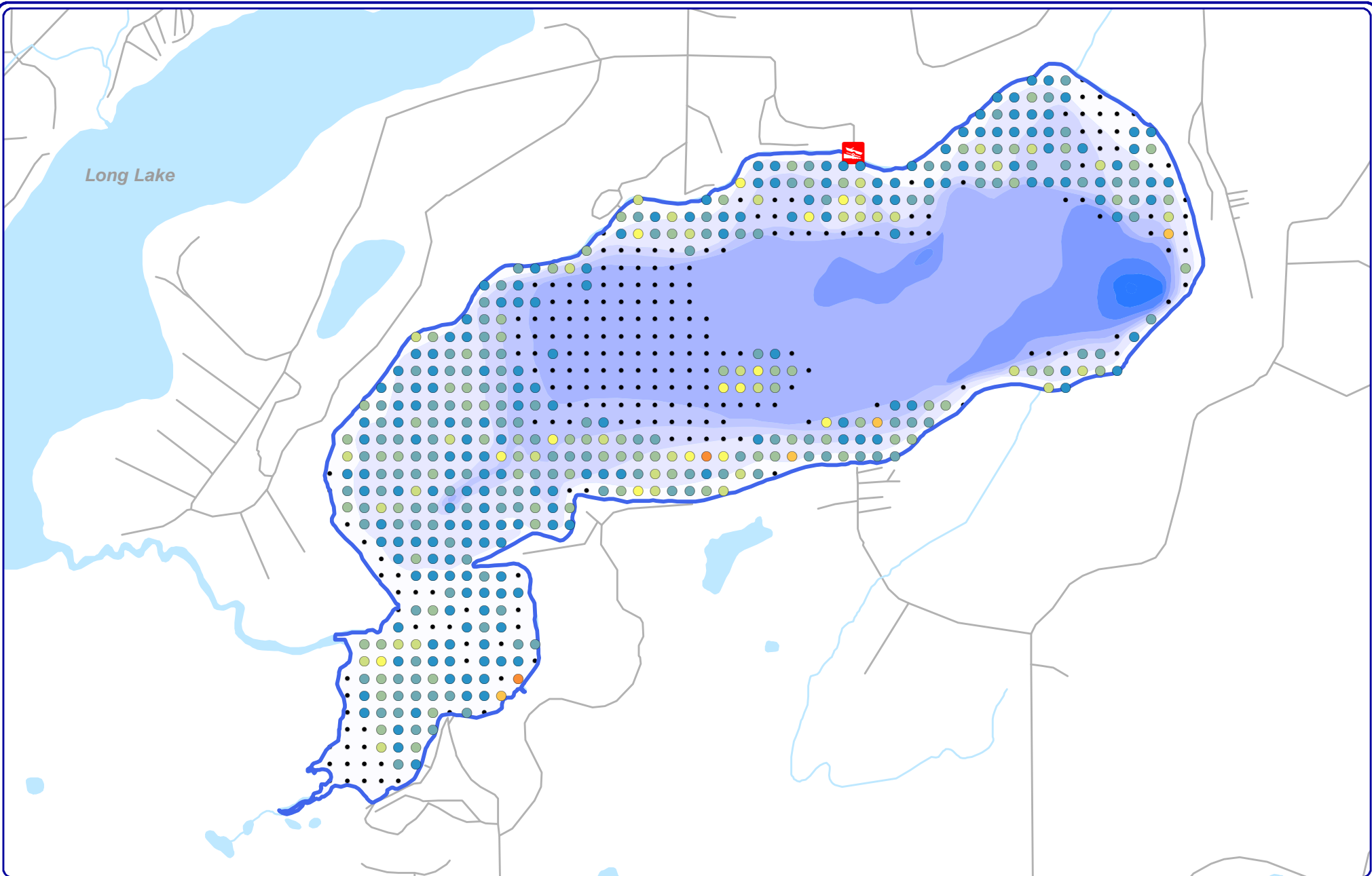


Project Location in Wisconsin

Legend

- Big Sand ~ 1,427 acres
WDNR Definition
- WDNR Managed Lands
- USDA County Forest
- Public Access

Map 1
Big Sand Lake
Vilas County, Wisconsin
**Project Location &
Lake Boundaries**



Long Lake

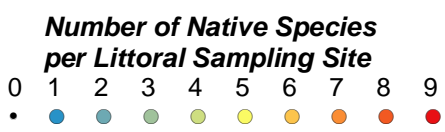


Onterra LLC
 Lake Management Planning
 815 Prosper Road
 De Pere, WI 54115
 920.338.8860
 www.onterra-eco.com

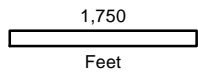
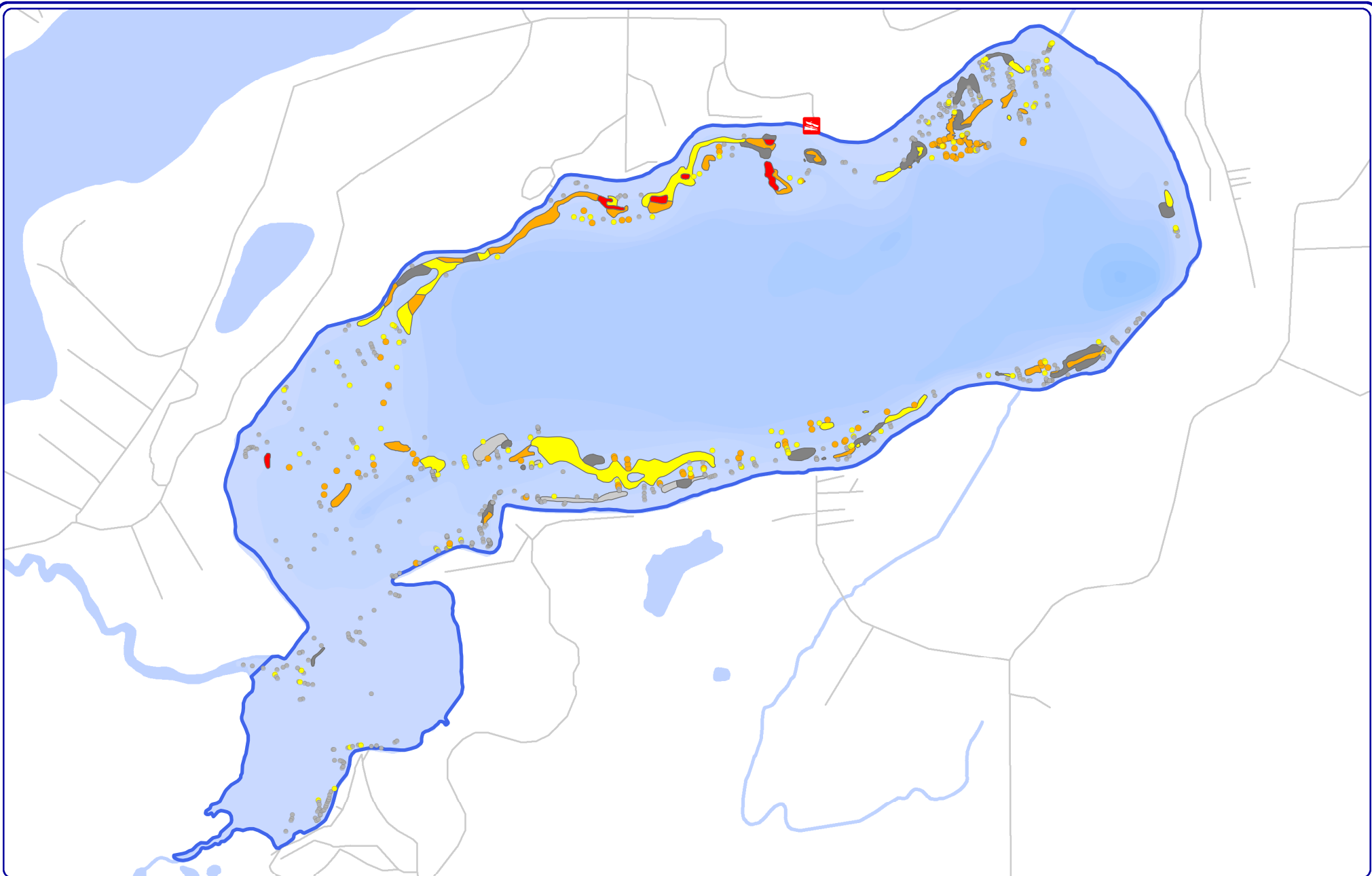
Sources:
 Hydro: WDNR
 Bathymetry: WDNR, digitized by Onterra
 Aquatic Plant Survey: Onterra, 2022
 Map date: February 2nd, 2023 KLV
 Filename: Map2_BigSand_Richness.mxd



Legend



Map 2
 Big Sand Lake
 Vilas County, Wisconsin
2022 PI Survey:
Native Species Richness



Onterra LLC
 Lake Management Planning
 815 Prosper Road
 De Pere, WI 54115
 920.338.8860
 www.onterra-eco.com

Sources:
 Hydro and Roads: WDNR
 Aquatic Plant Survey: Onterra, 2022
 Orthophotography: NAIP, 2020
 Map Date: October 21, 2022 JMB

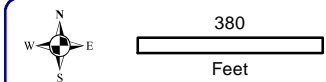
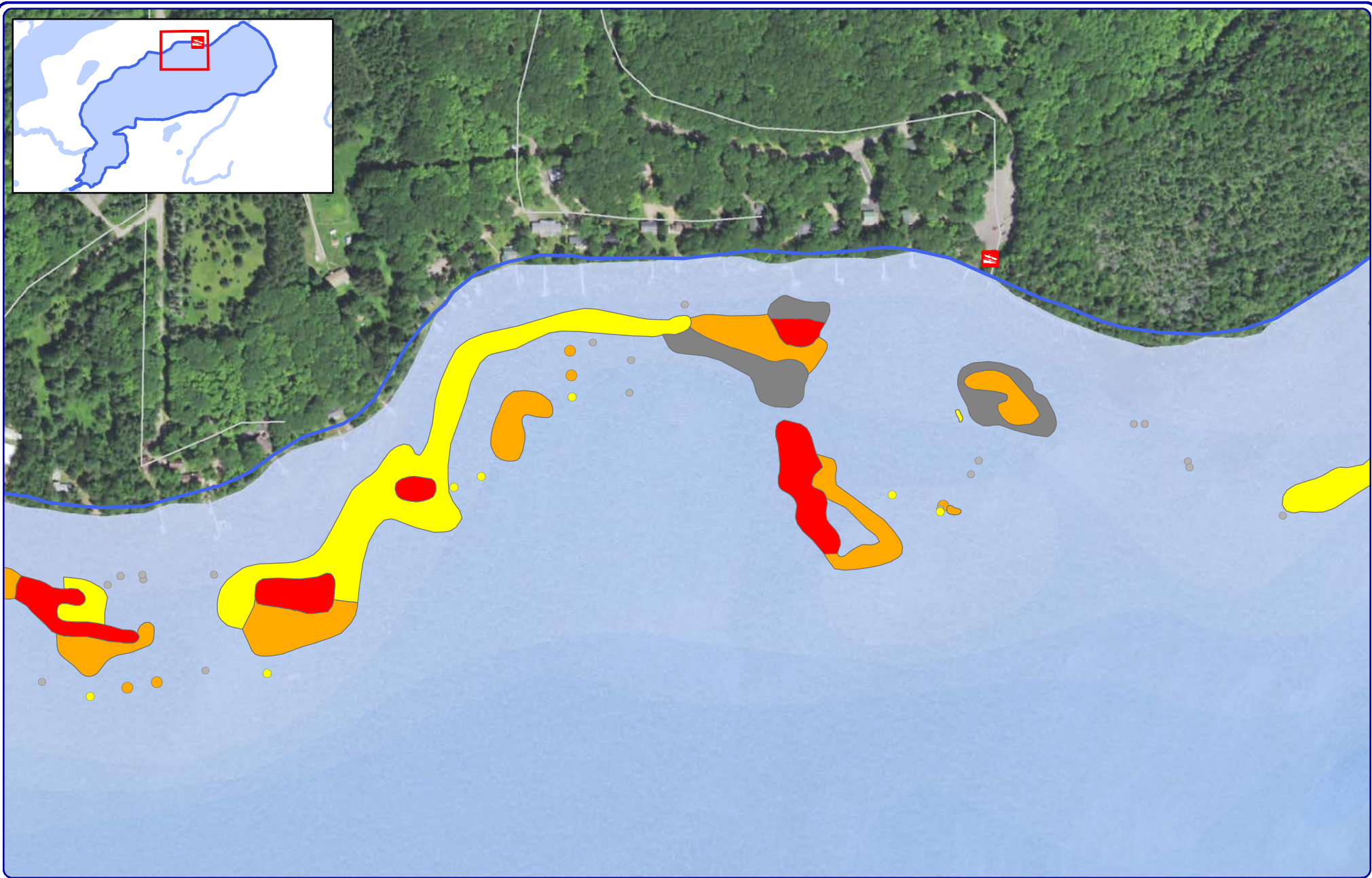


Project Location in Wisconsin

Legend

- EWM Mapping Survey: August 22, 2022**
- Highly Scattered
 - Scattered
 - Dominant
 - Highly Dominant
 - Surface Matting
 - Single or Few Plants
 - Clump of Plants
 - Small Plant Colony

Map 3
 Big Sand Lake
 Vilas County, Wisconsin
**August 2022 EWM
 Survey Results**



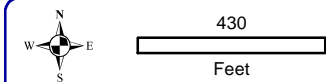
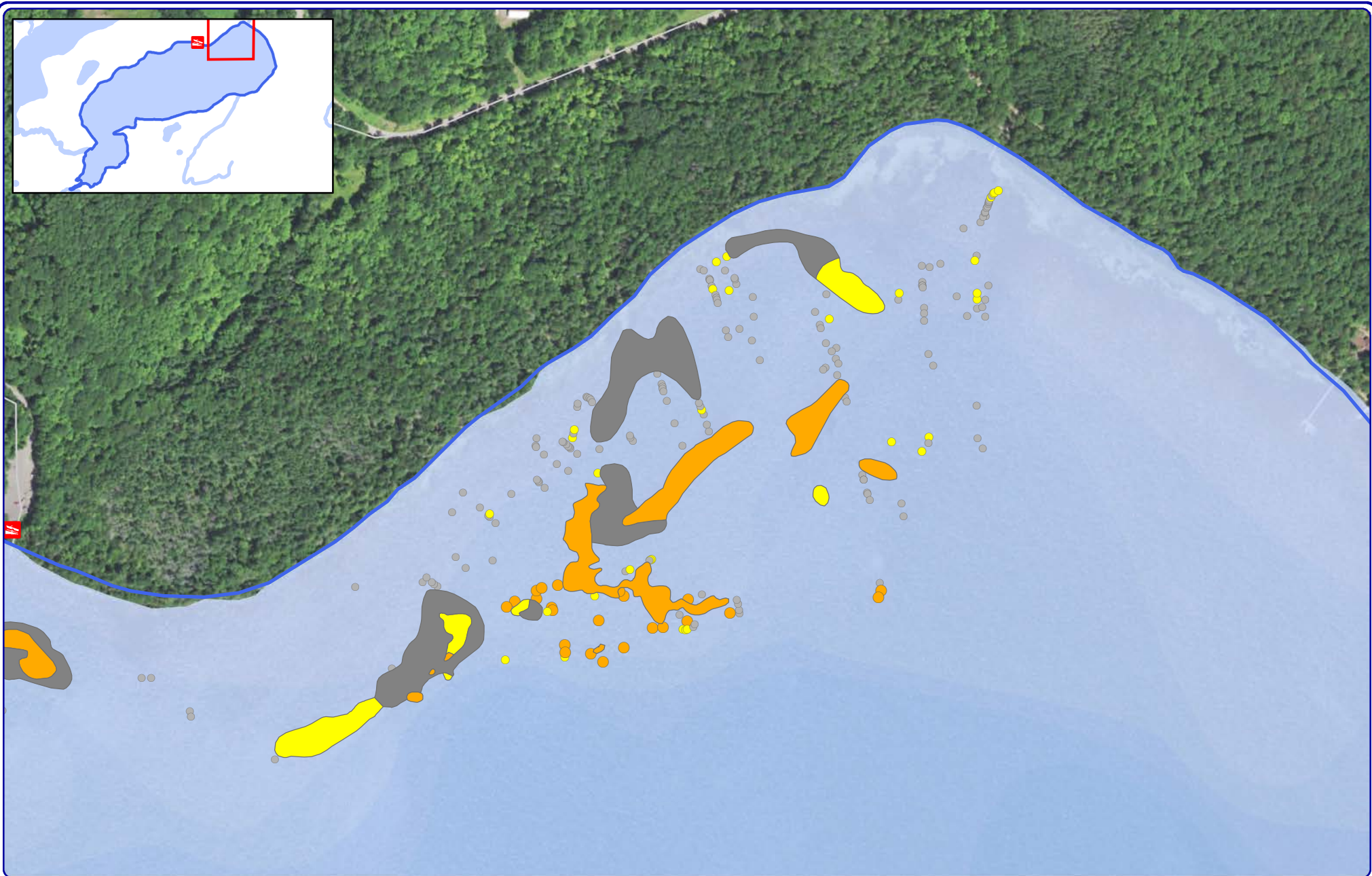
Onterra LLC
 Lake Management Planning
 815 Prosper Road
 De Pere, WI 54115
 920.338.8860
 www.onterra-eco.com

Sources:
 Hydro and Roads: WDNR
 Aquatic Plant Survey: Onterra, 2022
 Orthophotography: NAIP, 2020
 Map Date: October 21, 2022 JMB



- Legend**
EWM Mapping Survey: August 22, 2022
- Highly Scattered
 - Scattered
 - Dominant
 - Highly Dominant
 - Surface Matting
 - Single or Few Plants
 - Clump of Plants
 - Small Plant Colony

Map 4
 Big Sand Lake
 Vilas County, Wisconsin
**August 2022 EWM
 Survey Results**



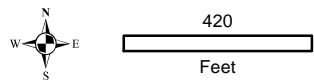
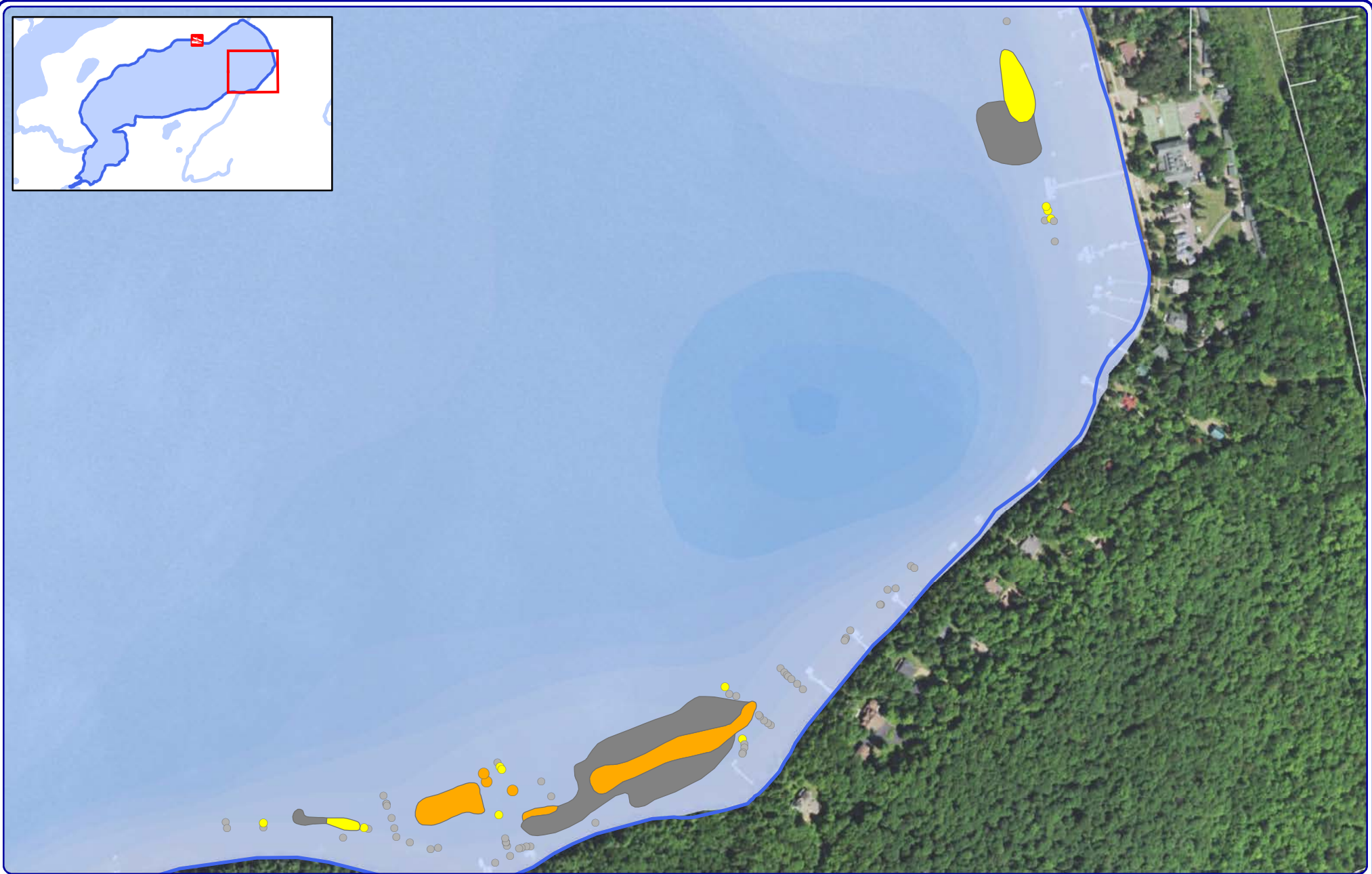
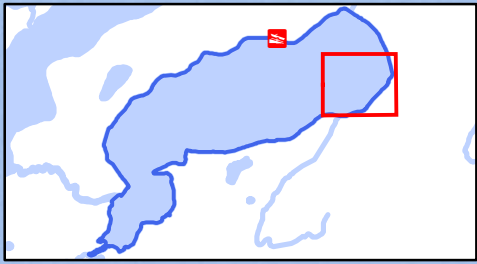
Onterra LLC
 Lake Management Planning
 815 Prosper Road
 De Pere, WI 54115
 920.338.8860
 www.onterra-eco.com

Sources:
 Hydro and Roads: WDNR
 Aquatic Plant Survey: Onterra, 2022
 Orthophotography: NAIP, 2020
 Map Date: October 21, 2022 JMB



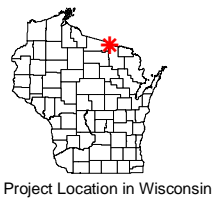
- Legend**
EWM Mapping Survey: August 22, 2022
- Highly Scattered
 - Scattered
 - Dominant
 - Highly Dominant
 - Surface Matting
 - Single or Few Plants
 - Clump of Plants
 - Small Plant Colony

Map 5
Big Sand Lake
 Vilas County, Wisconsin
**August 2022 EWM
 Survey Results**



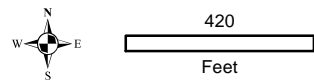
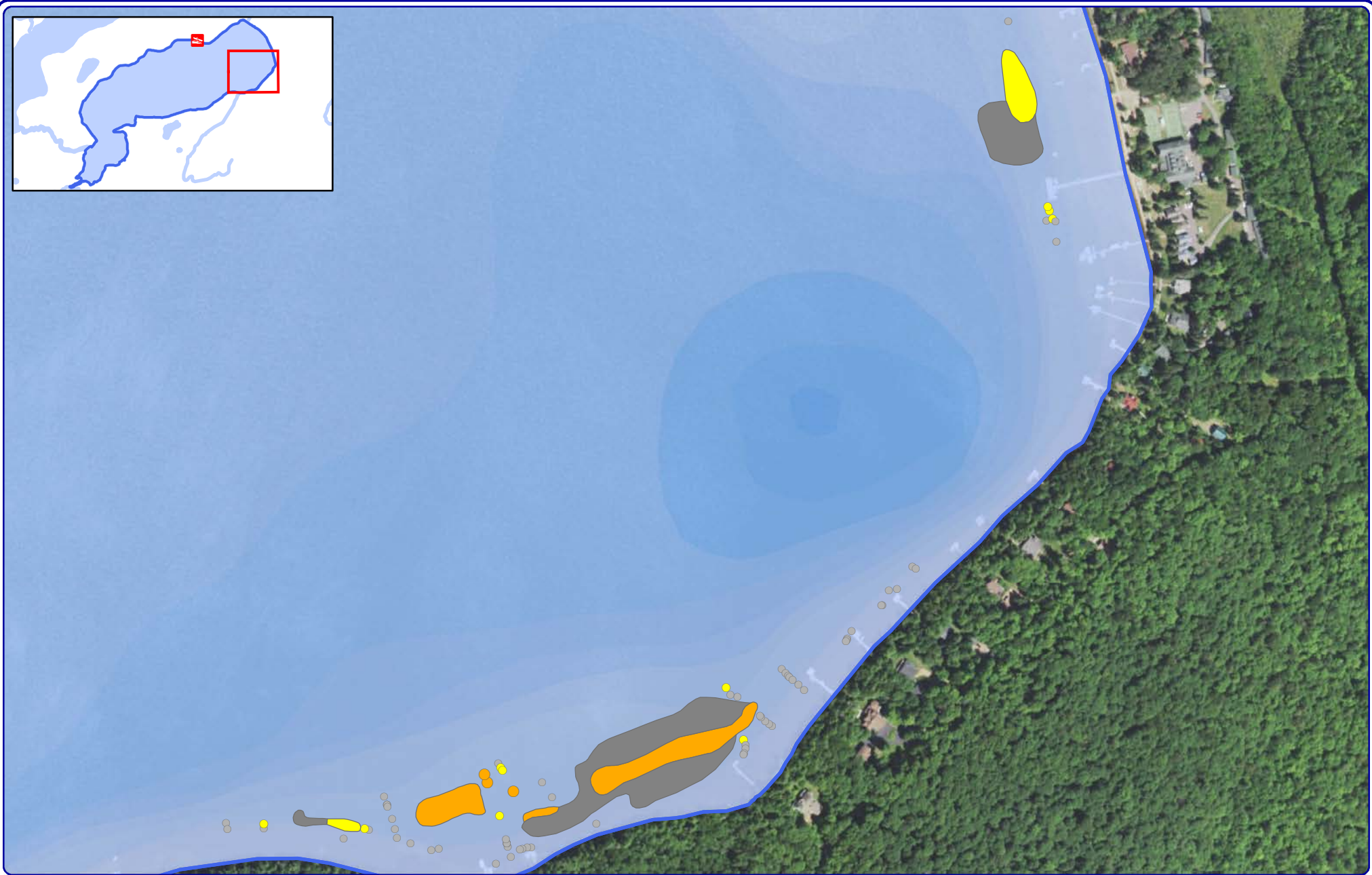
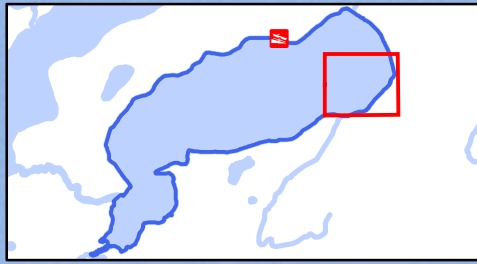
Onterra LLC
 Lake Management Planning
 815 Prosper Road
 De Pere, WI 54115
 920.338.8860
 www.onterra-eco.com

Sources:
 Hydro and Roads: WDNR
 Aquatic Plant Survey: Onterra, 2022
 Orthophotography: NAIP, 2020
 Map Date: October 21, 2022 JMB



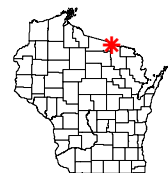
- Legend**
EWM Mapping Survey: August 22, 2022
- Highly Scattered
 - Scattered
 - Dominant
 - Highly Dominant
 - Surface Matting
 - Single or Few Plants
 - Clump of Plants
 - Small Plant Colony

Map 6
 Big Sand Lake
 Vilas County, Wisconsin
**August 2022 EWM
 Survey Results**



Onterra LLC
 Lake Management Planning
 815 Prosper Road
 De Pere, WI 54115
 920.338.8860
 www.onterra-eco.com

Sources:
 Hydro and Roads: WDNR
 Aquatic Plant Survey: Onterra, 2022
 Orthophotography: NAIP, 2020
 Map Date: October 21, 2022 JMB

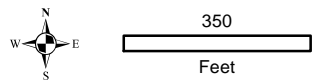
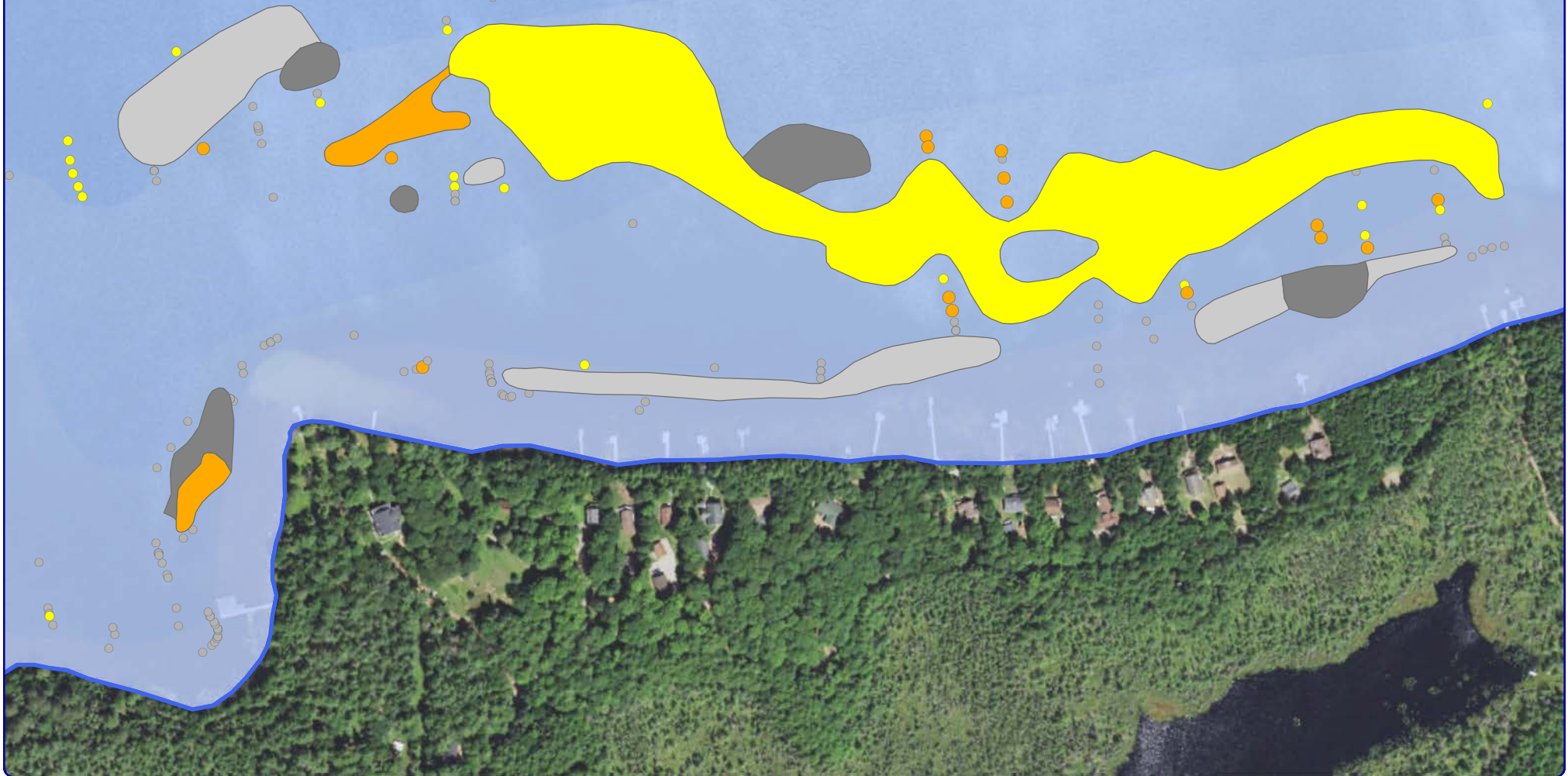
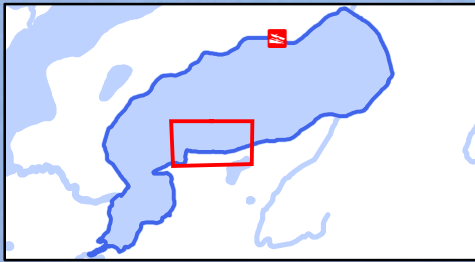


Project Location in Wisconsin

Legend

- EWM Mapping Survey: August 22, 2022**
- Highly Scattered
 - Scattered
 - Dominant
 - Highly Dominant
 - Surface Matting
 - Single or Few Plants
 - Clump of Plants
 - Small Plant Colony

Map 7
 Big Sand Lake
 Vilas County, Wisconsin
**August 2022 EWM
 Survey Results**



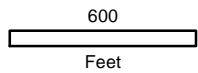
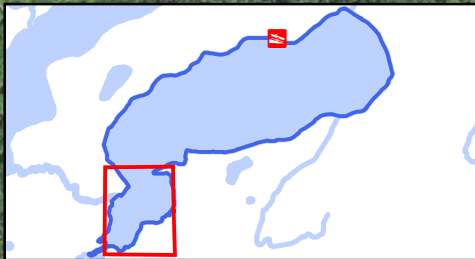
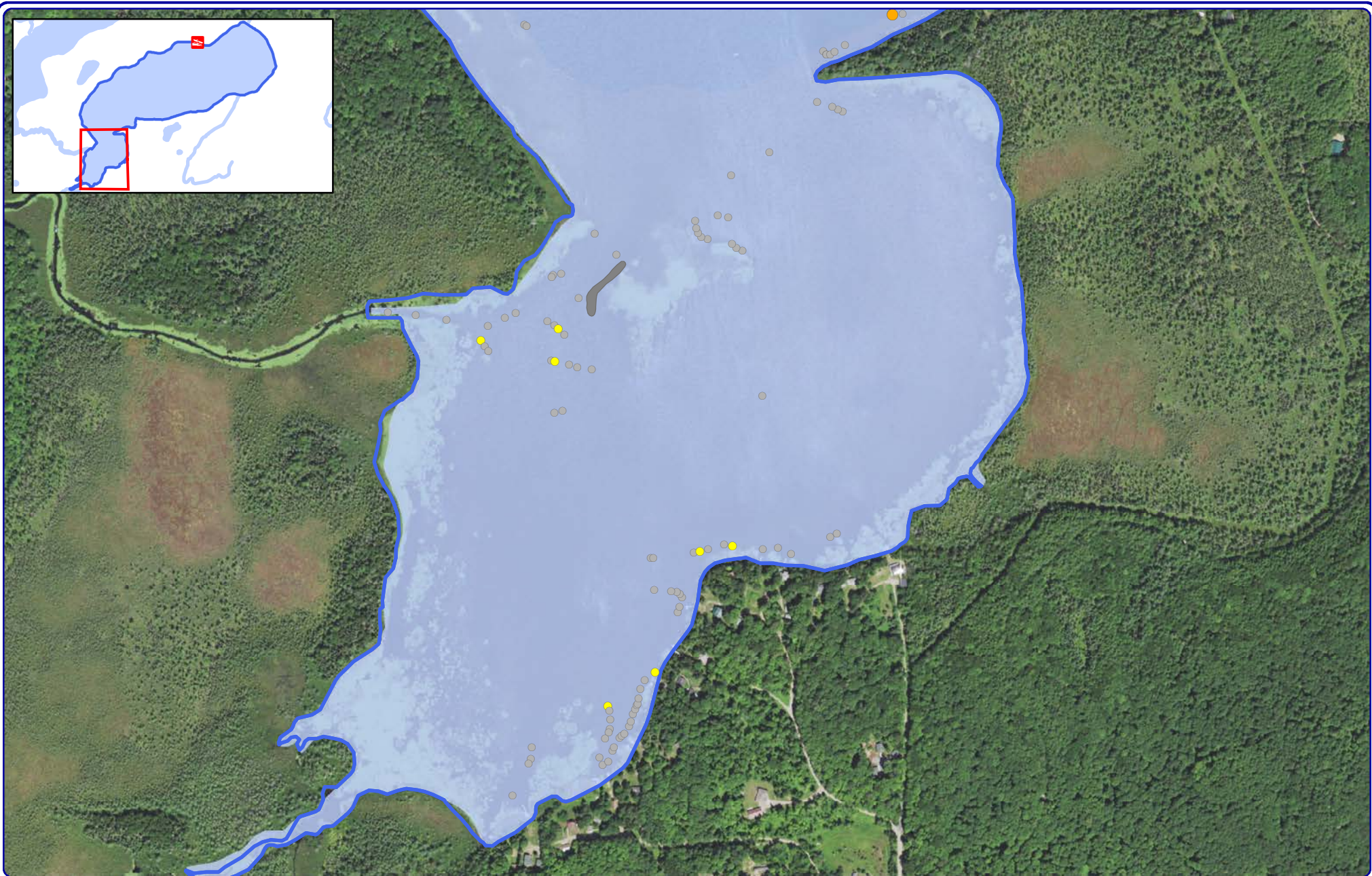
Onterra LLC
 Lake Management Planning
 815 Prosper Road
 De Pere, WI 54115
 920.338.8860
 www.onterra-eco.com

Sources:
 Hydro and Roads: WDNR
 Aquatic Plant Survey: Onterra, 2022
 Orthophotography: NAIP, 2020
 Map Date: October 21, 2022 JMB



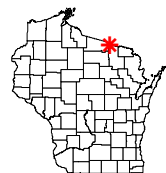
- Legend**
EWM Mapping Survey: August 22, 2022
- Highly Scattered
 - Scattered
 - Dominant
 - Highly Dominant
 - Surface Matting
 - Single or Few Plants
 - Clump of Plants
 - Small Plant Colony

Map 8
Big Sand Lake
 Vilas County, Wisconsin
**August 2022 EWM
 Survey Results**



Onterra LLC
 Lake Management Planning
 815 Prosper Road
 De Pere, WI 54115
 920.338.8860
 www.onterra-eco.com

Sources:
 Hydro and Roads: WDNR
 Aquatic Plant Survey: Onterra, 2022
 Orthophotography: NAIP, 2020
 Map Date: October 21, 2022 JMB

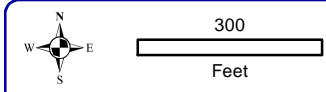
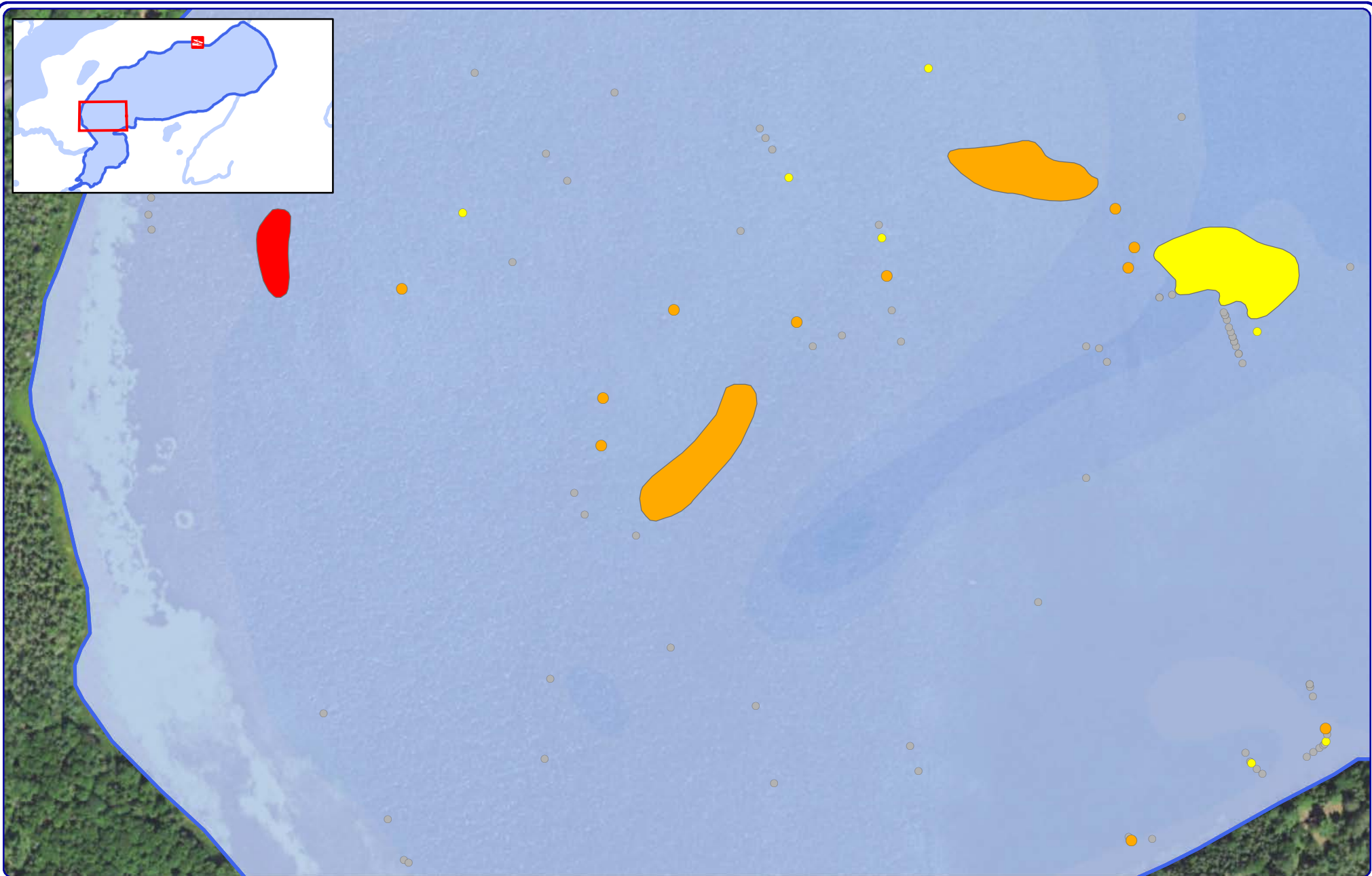


Project Location in Wisconsin

Legend

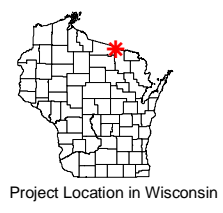
- EWM Mapping Survey: August 22, 2022**
- Highly Scattered
 - Scattered
 - Dominant
 - Highly Dominant
 - Surface Matting
 - Single or Few Plants
 - Clump of Plants
 - Small Plant Colony

Map 9
 Big Sand Lake
 Vilas County, Wisconsin
**August 2022 EWM
 Survey Results**



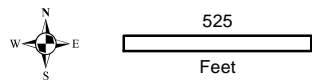
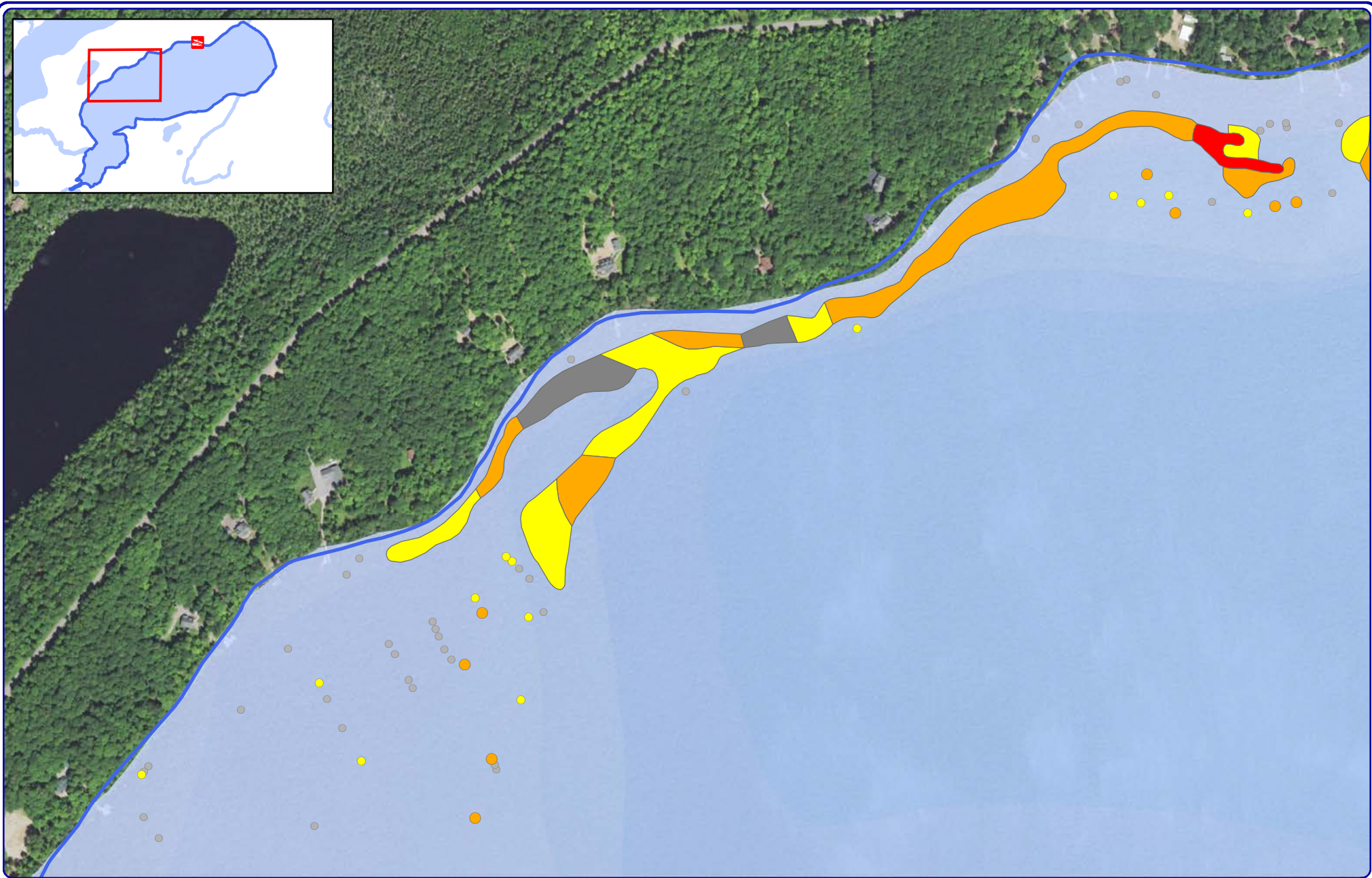
Onterra LLC
 Lake Management Planning
 815 Prosper Road
 De Pere, WI 54115
 920.338.8860
 www.onterra-eco.com

Sources:
 Hydro and Roads: WDNR
 Aquatic Plant Survey: Onterra, 2022
 Orthophotography: NAIP, 2020
 Map Date: October 21, 2022 JMB



- Legend**
EWM Mapping Survey: August 22, 2022
- Highly Scattered
 - Scattered
 - Dominant
 - Highly Dominant
 - Surface Matting
 - Single or Few Plants
 - Clump of Plants
 - Small Plant Colony

Map 10
Big Sand Lake
 Vilas County, Wisconsin
**August 2022 EWM
 Survey Results**



Onterra LLC
 Lake Management Planning
 815 Prosper Road
 De Pere, WI 54115
 920.338.8860
 www.onterra-eco.com

Sources:
 Hydro and Roads: WDNR
 Aquatic Plant Survey: Onterra, 2022
 Orthophotography: NAIP, 2020
 Map Date: October 21, 2022 JMB



- Legend**
EWM Mapping Survey: August 22, 2022
- Highly Scattered
 - Dominant
 - Highly Dominant
 - Surface Matting
 - Single or Few Plants
 - Clump of Plants
 - Small Plant Colony

Map 11
Big Sand Lake
 Vilas County, Wisconsin
**August 2022 EWM
 Survey Results**